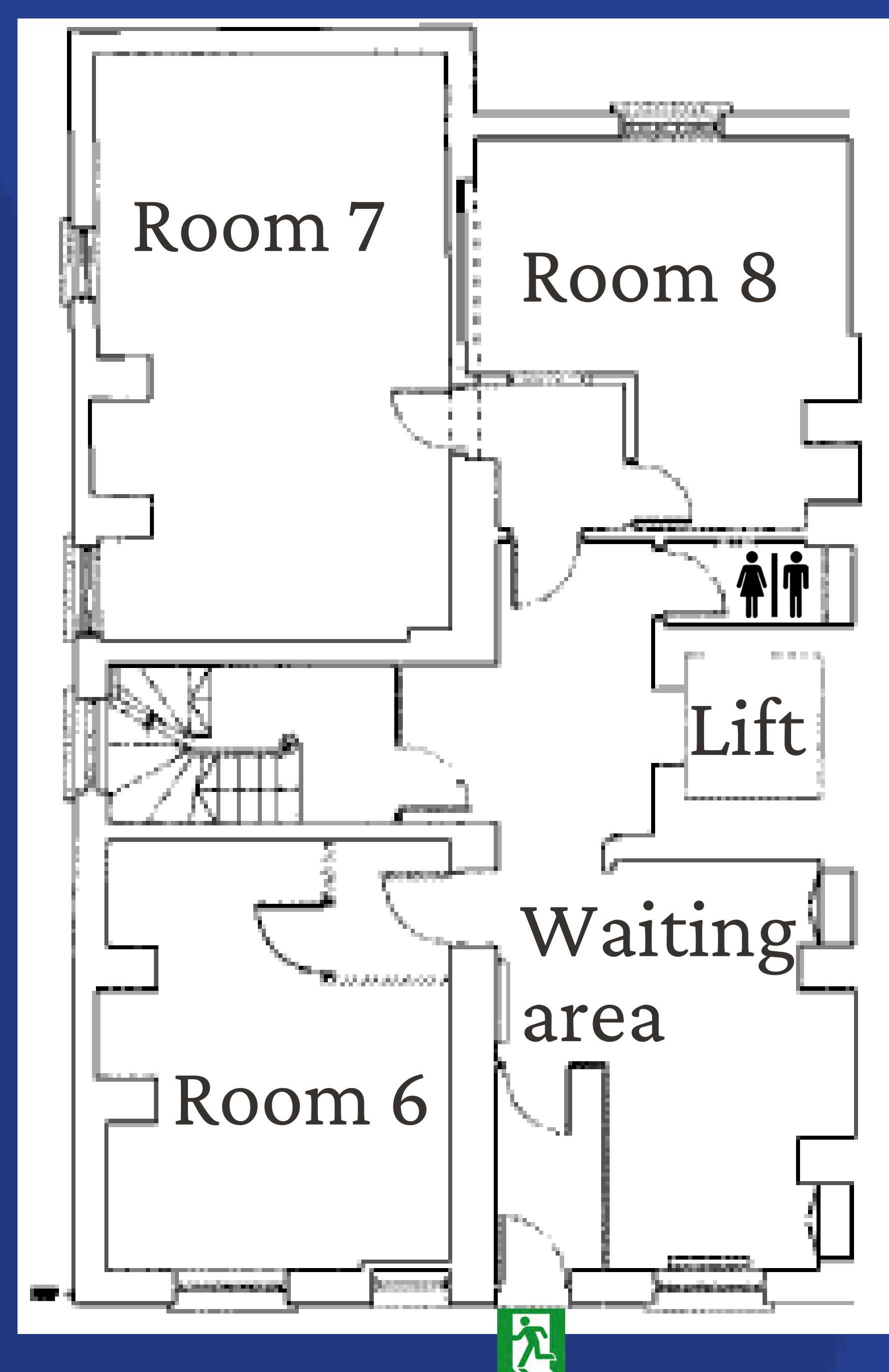




# Jesus Lane Meeting Rooms

Ground floor



Basement



## Capacities

### Boardroom | Lecture

Room 3: 12 | 15

Room 6: 10 | 12

Room 7: 16 | 20

Room 8: 10 | 12

The Jesus Lane Meeting Rooms can be laid out for boardroom meetings, small lectures, or arranged in a classroom configuration for teaching sessions.

Each of the rooms has inbuilt AV equipment.

**Plan is not to scale.**

Room 3

Boardroom: 12

Lecture: 15



Room 6

Boardroom: 10

Lecture: 12



Room 7

Boardroom: 16

Lecture: 20



Room 8

Boardroom: 10

Lecture: 12



The Jesus Lane Building is just across the road from the main College site. It houses staff offices, a student music room, as well as four modern seminar rooms with inbuilt AV equipment. The photos above illustrate possible room layouts. Bespoke arrangements can also be made with the Conference Office.